

# ENRICHLAND

ENRICHLAND DEVELOPMENT LIMITED

**FAITH WILL MOVE MOUNTAINS**

📍 Level 18, No. 201 Queen Street, Auckland, New Zealand

---

[info@enrichland.co.nz](mailto:info@enrichland.co.nz)





# ENRICHLAND

Enrichland Development Limited Company(Formerly Heytour) is a real estate development company founded in 2016, headquartered in Level 18, No. 201 Queen Street, Auckland, New Zealand. Our development areas include residential properties, hotel apartments and tourist properties. More than 100 properties have been successfully developed across the major cities and tourist areas of New Zealand's North and South Islands.

As a real estate development company, we are committed to providing high quality properties and services to meet the residential and investment needs of our customers, and welcome to cooperate with us.

## CONTENTS

### 01 / DEVELOPED

PAGE 01-32

### 02 / NOW DEVELOPING

### 03 / FUTURE

PAGE 33-38



# Developed

AVONDALE, AUCKLAND

321<sup>m<sup>2</sup></sup>

LAND AREA

3

BEDROOMS

2

BATHROOMS

2

GARAGING

1

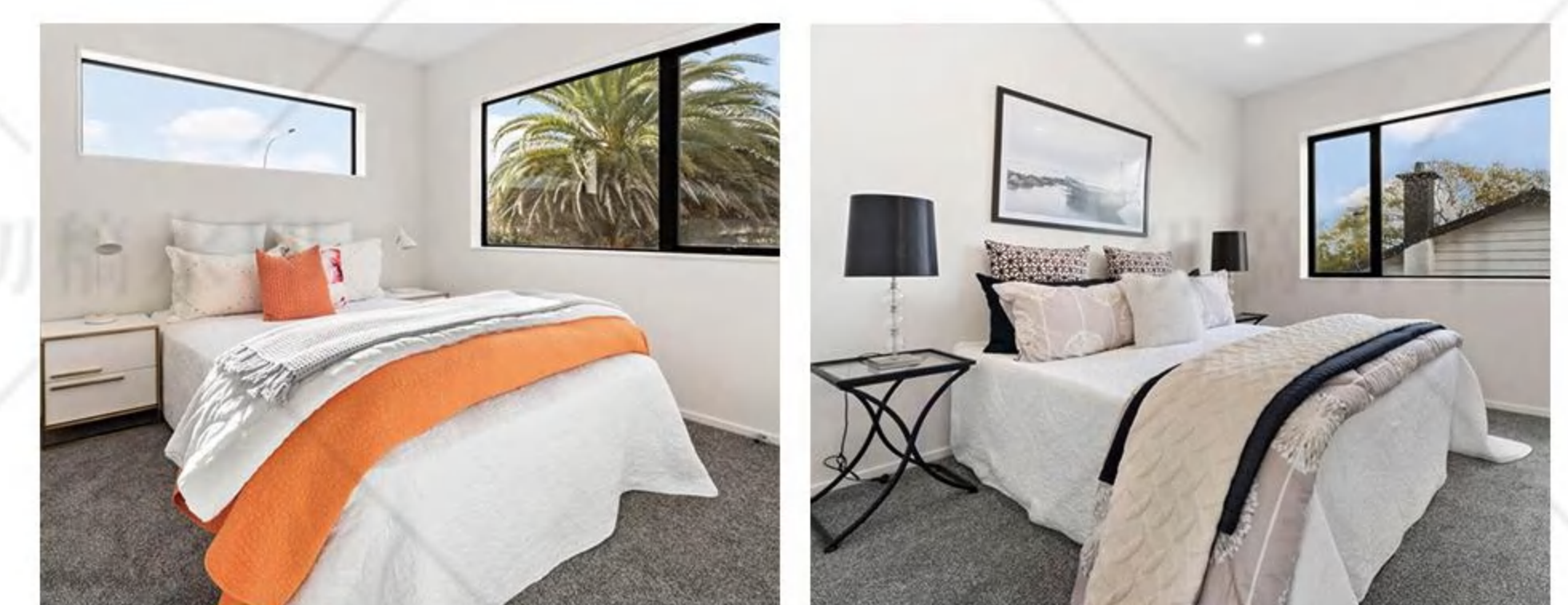
PROPERTY TYPE  
**HOUSE**







There are three generous size bedrooms and two and half modern bathrooms (including ensuite), built in solid weatherboard construction with well-designed layout. Downstairs offers modern and spacious open plan kitchen, dining and lounge which captures all-day sun. Double internal garaging with laundry. And added to these impressive credentials is modern flooring, underfloor heating in bathrooms, double-glazed windows, alarm system, heat pump, and a kitchen that offers quality Boshch appliances, quality cabinets and benchtop, gas water heating, and gas cooking. Ducted for central vacuum system. Landscaped gardens on freehold title.





# Developed

RODNEY, AUCKLAND

620<sup>m<sup>2</sup></sup>

LAND AREA

289<sup>m<sup>2</sup></sup>

BUILDING

5

BEDROOMS

4

BATHROOMS

3

LIVING ROOMS

2

GARAGING

2

PROPERTY TYPE  
**HOUSE**







There are five generous size bedrooms and four modern bathrooms (including two master suites). Modern and spacious open plan kitchen, dining and lounge with sliding door which captures beautiful sea view . Double internal garaging with laundry.







# Developed

RODNEY, AUCKLAND

600<sup>m<sup>2</sup></sup>

LAND AREA

300<sup>m<sup>2</sup></sup>

BUILDING

5

BEDROOMS

3

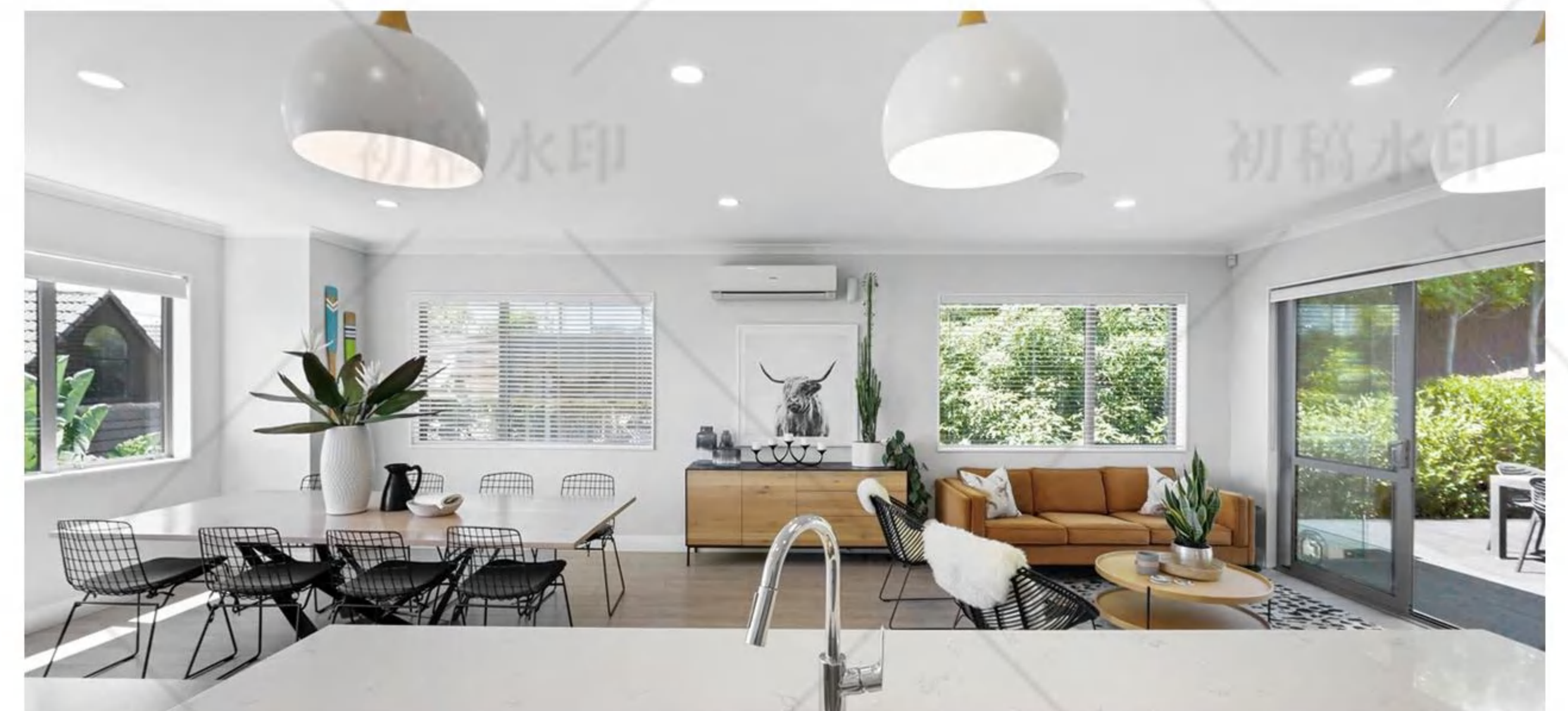
BATHROOMS

2

GARAGING

3

PROPERTY TYPE  
**HOUSE**







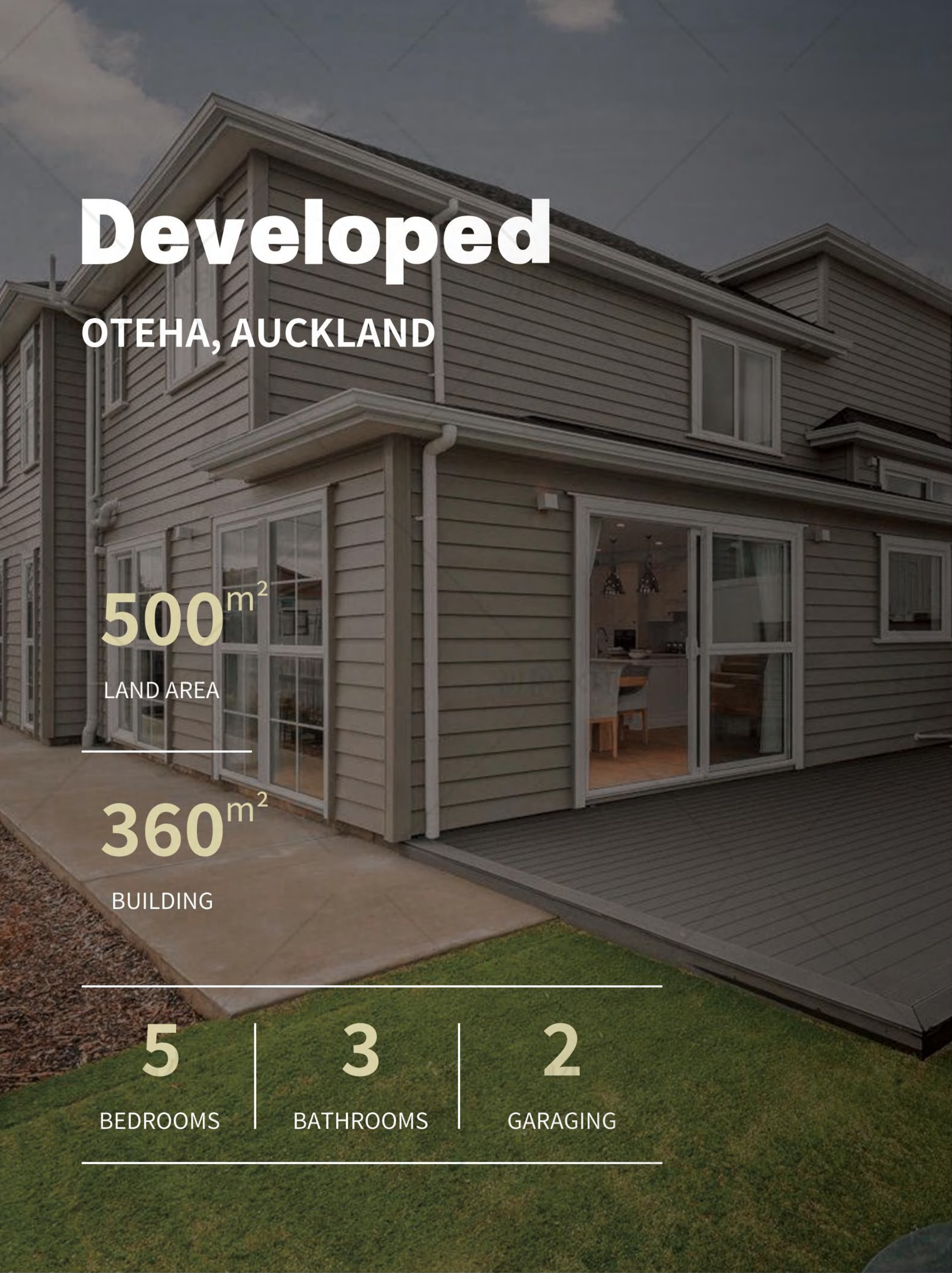
There are five spacious bedrooms, three lounges, and three well-appointed bathrooms.

The downstairs area features two bedrooms, a third bathroom, and a large laundry room that could serve as a self-contained area, perfect for teenagers to have their own space.

This stunning home also offers plenty of storage, a massive double garage, and off-street parking.







# Developed

OTEHA, AUCKLAND

500<sup>m<sup>2</sup></sup>

LAND AREA

360<sup>m<sup>2</sup></sup>

BUILDING

5

BEDROOMS

3

BATHROOMS

2

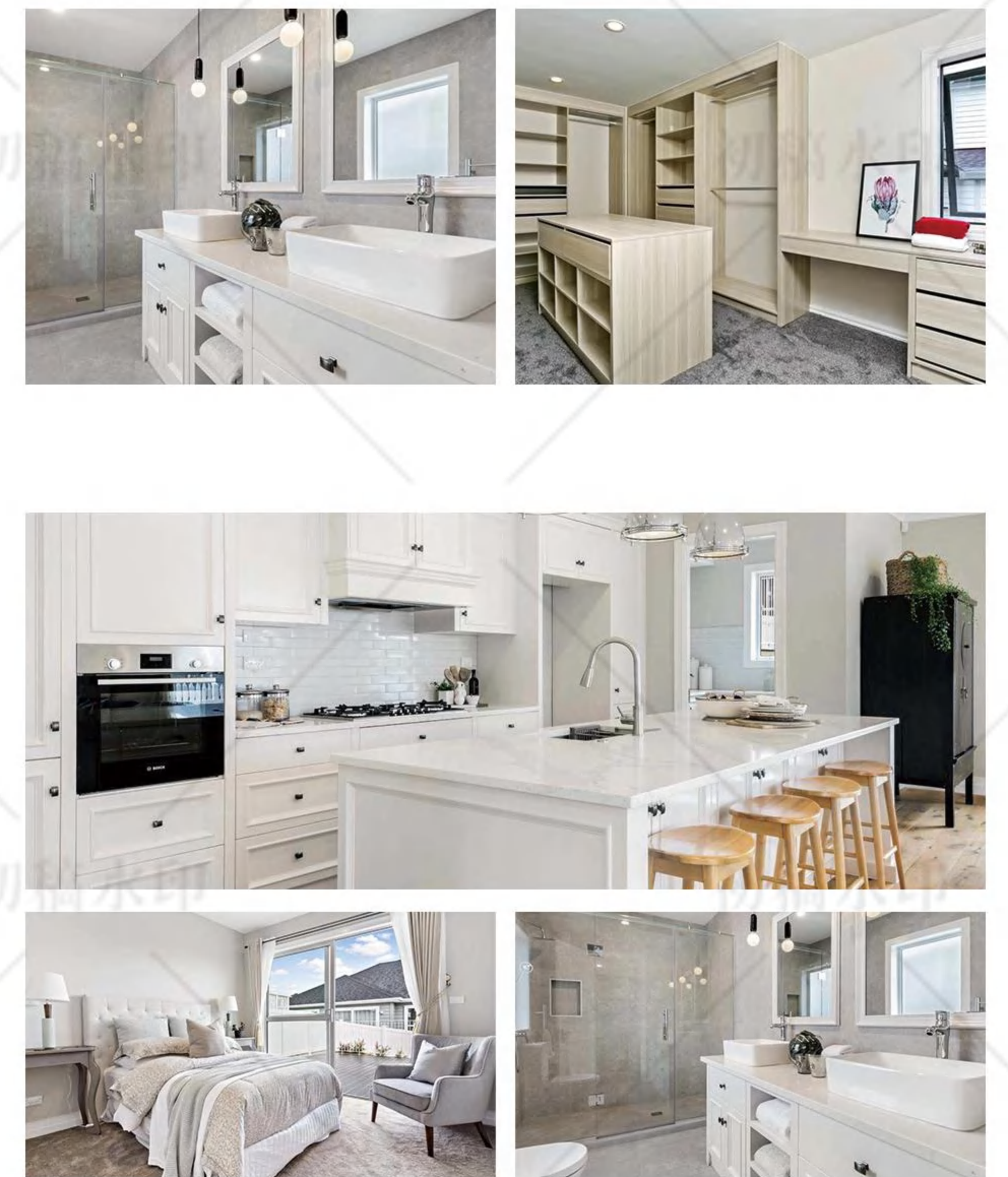
GARAGING

4

PROPERTY TYPE  
HOUSE









# Developed

RANUI, AUCKLAND

450<sup>m<sup>2</sup></sup>

LAND AREA

251<sup>m<sup>2</sup></sup>

BUILDING

5

BEDROOMS

3

BATHROOMS

2

GARAGING

5

PROPERTY TYPE  
HOUSE



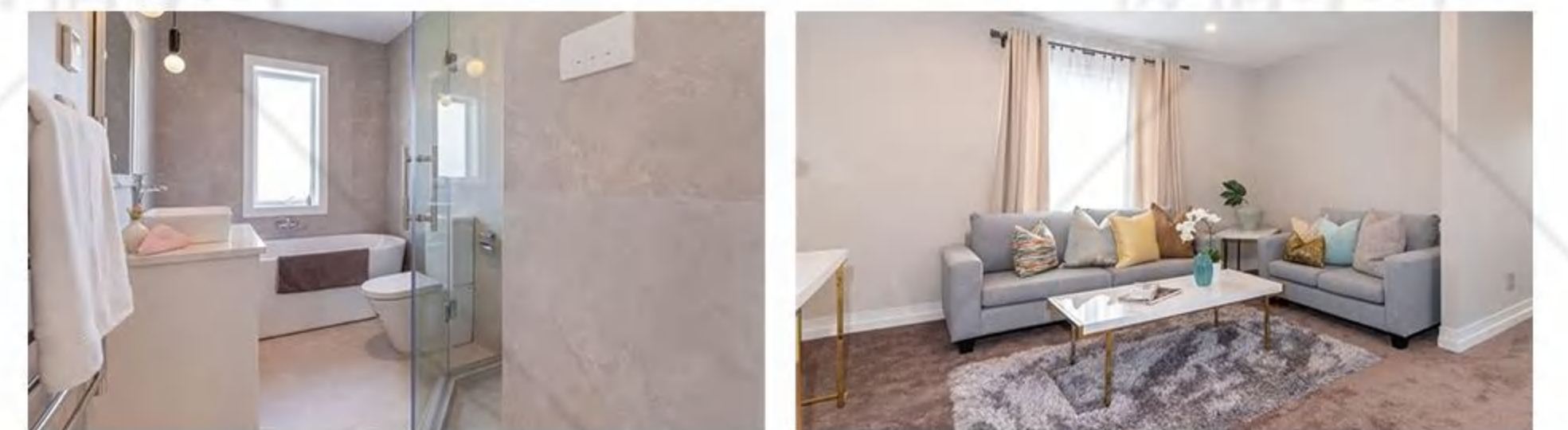
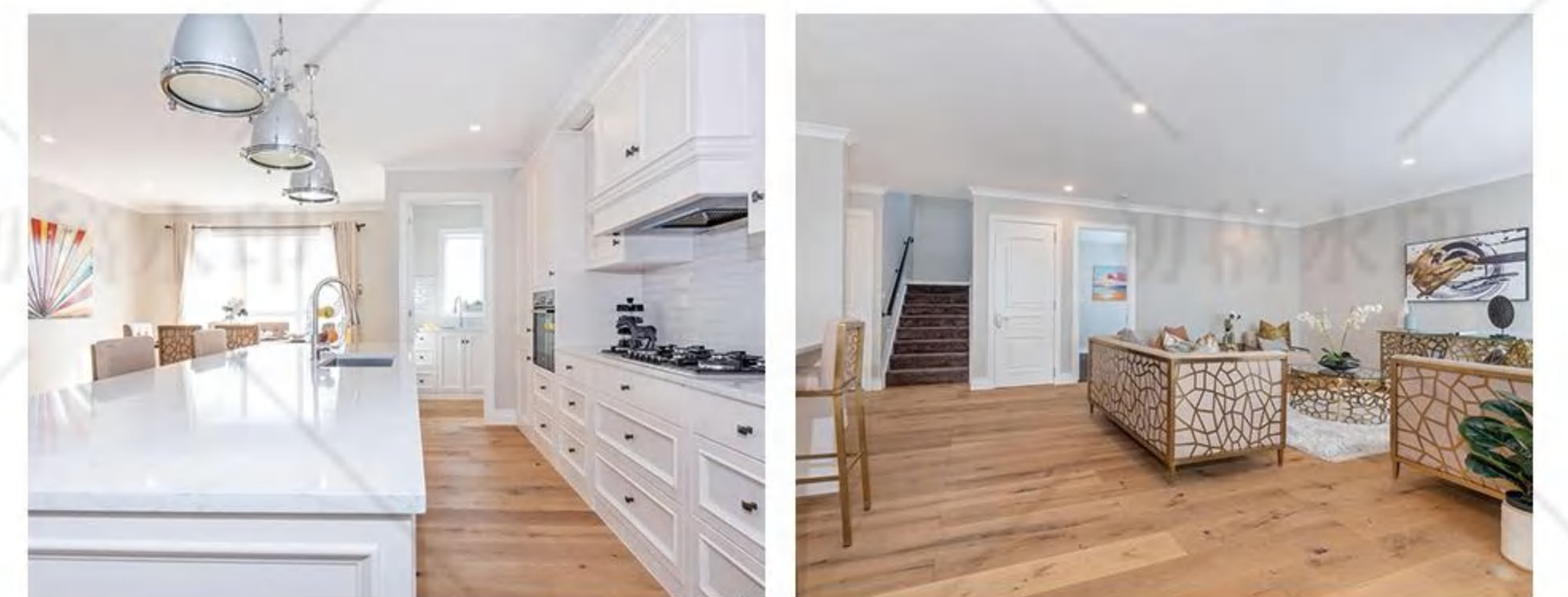




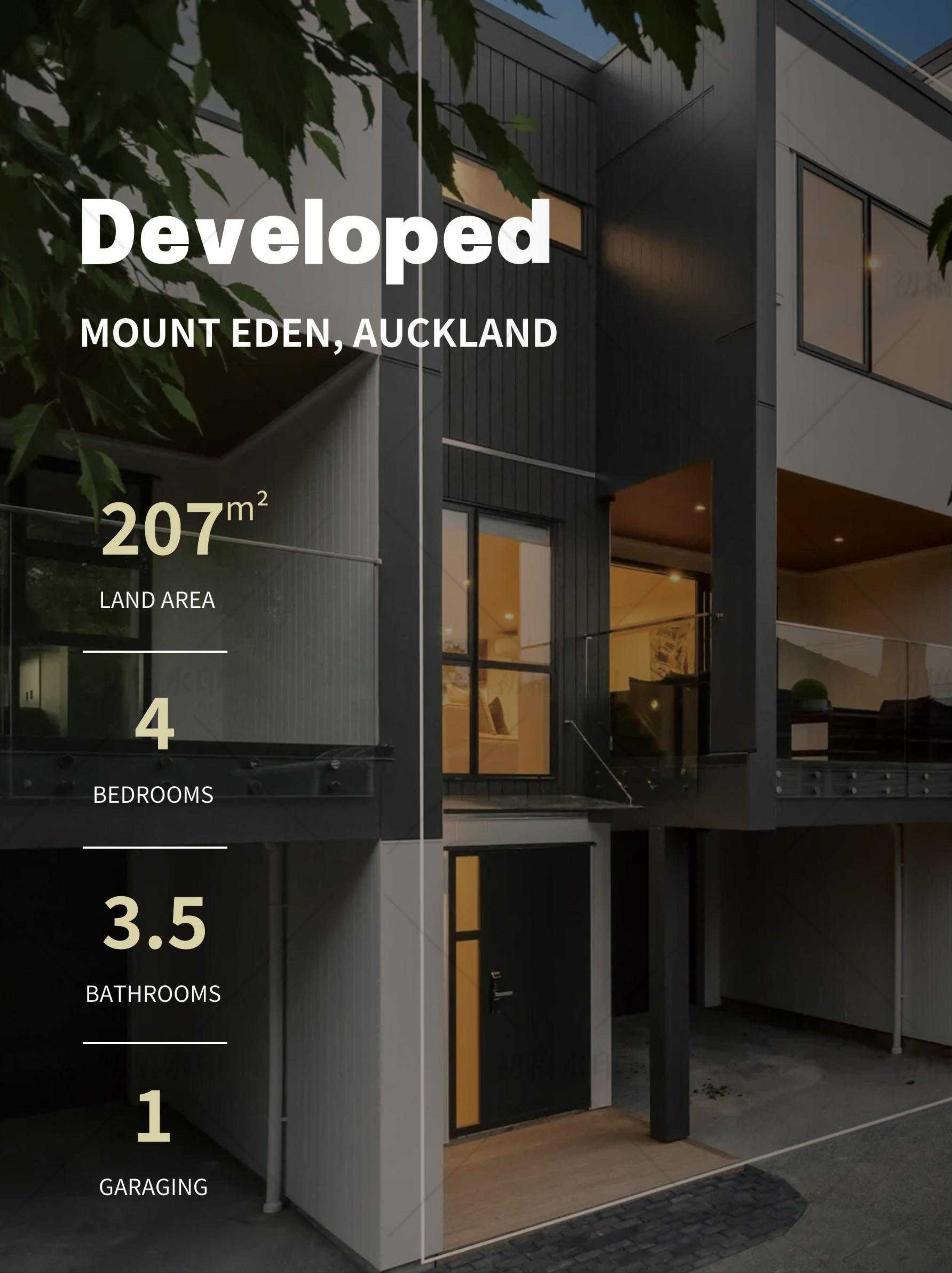
Solid Weatherboard construction to endure the test of time, with attention to detail and master planning of this design built new home, is easily evident in the grandeur and class of this hallmark property.

An impressive entrance immediately greets you when you enter this property. There is a separate living lounge, open plan, the master chef's kitchen with impressive stone benchtops, quality appliances and formal dining area all opening out to the super large deck areas where you can enjoy sunshine with family and friends all year round.

5 double bedrooms and 3 impressive bathrooms inclusive 2 master ensuites will ensure there is space and room to meet all the family's needs. This property is thoughtfully planned and packaged with high quality chattels, central vacuum, dishwasher, bosch gas cooktop/oven, Heat Pumps, Wall Heater, alarm systems and much more...







# Developed

MOUNT EDEN, AUCKLAND

207<sup>m<sup>2</sup></sup>

LAND AREA

4

BEDROOMS

3.5

BATHROOMS

1

GARAGING

6

PROPERTY TYPE  
HOUSE



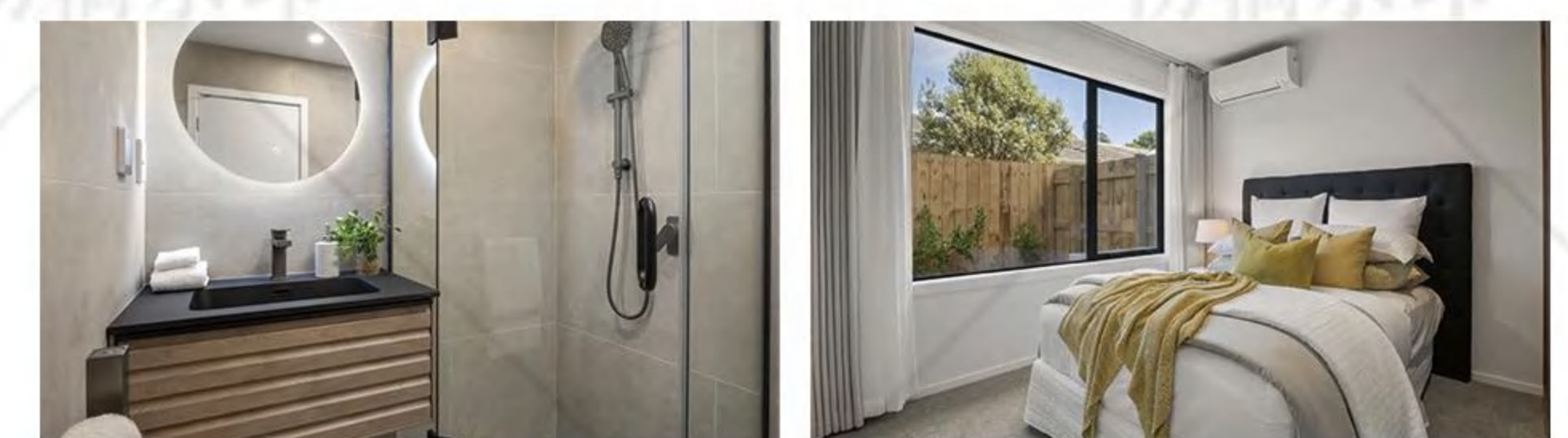
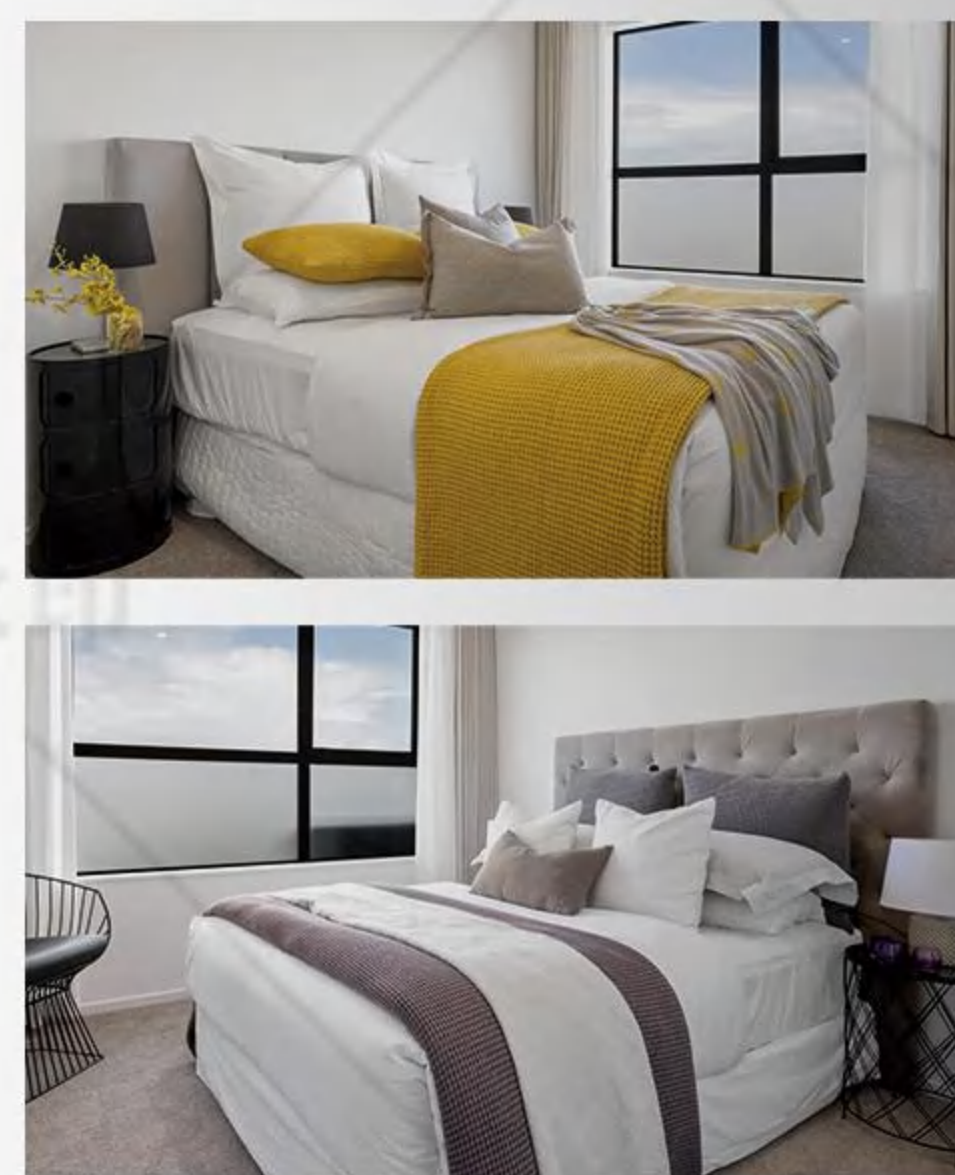




Welcome to 46 View Road, where townhouses not only showcase exceptional architectural quality, but are also the epitome of modern luxury living. The newly built homes are ready and every detail has been meticulously polished to create an elegant and comfortable living environment.

The house has a built-up area of 207 square meters and consists of 4 double bedrooms and 3.5 beautifully renovated bathrooms. The master suite is a tranquil private space with a luxurious en-suite bathroom including a bathtub and walk-in closet. The home is equipped with state-of-the-art Miele appliances and an additional kitchen, making it convenient for entertaining guests or family meals. The open-plan designed dining and living room, as well as a covered terrace, offer ample indoor and outdoor living space.

Five air-conditioning units ensure that the house is comfortable and livable in all seasons.





# Developed

## CHRISTCHURCH

30<sup>m<sup>2</sup></sup>

APARTMENT TYPE

38<sup>m<sup>2</sup></sup>

APARTMENT TYPE

80<sup>m<sup>2</sup></sup>

APARTMENT TYPE

27

SET NO.

35

PARKING

REFINED

DECORATION STATUS

7

PROPERTY TYPE  
**APARTMENT**



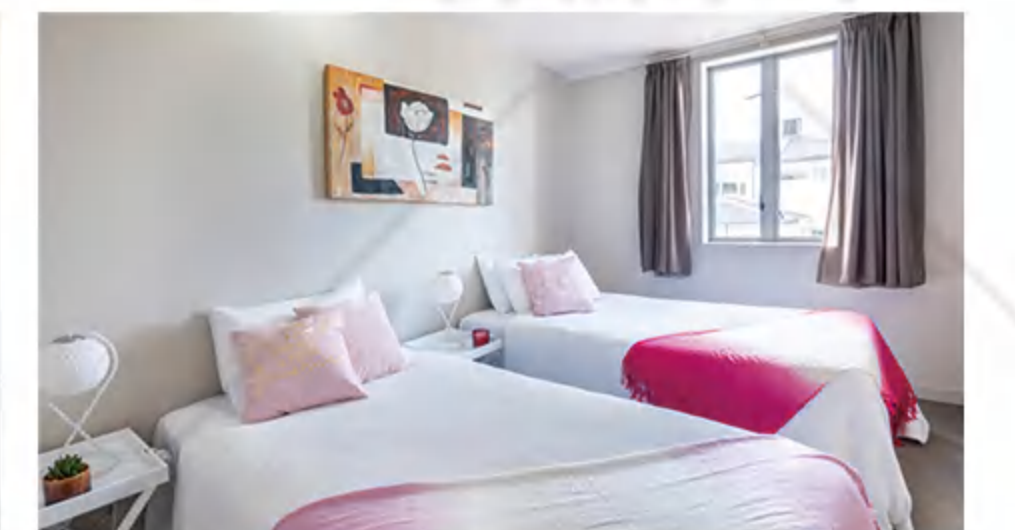




The apartments are just a 10-minute walk from Christchurch city centre, 1-minute walk from the Temporary Cathedral, and 11-minute walk from New Regent Street and a 6-minute drive from Hagley Park and Christchurch Casino. It is only 20 minutes drive way from Christchurch Airport.

The apartments offers private balconies and unlimited free WiFi, free parking and outdoor seatings.

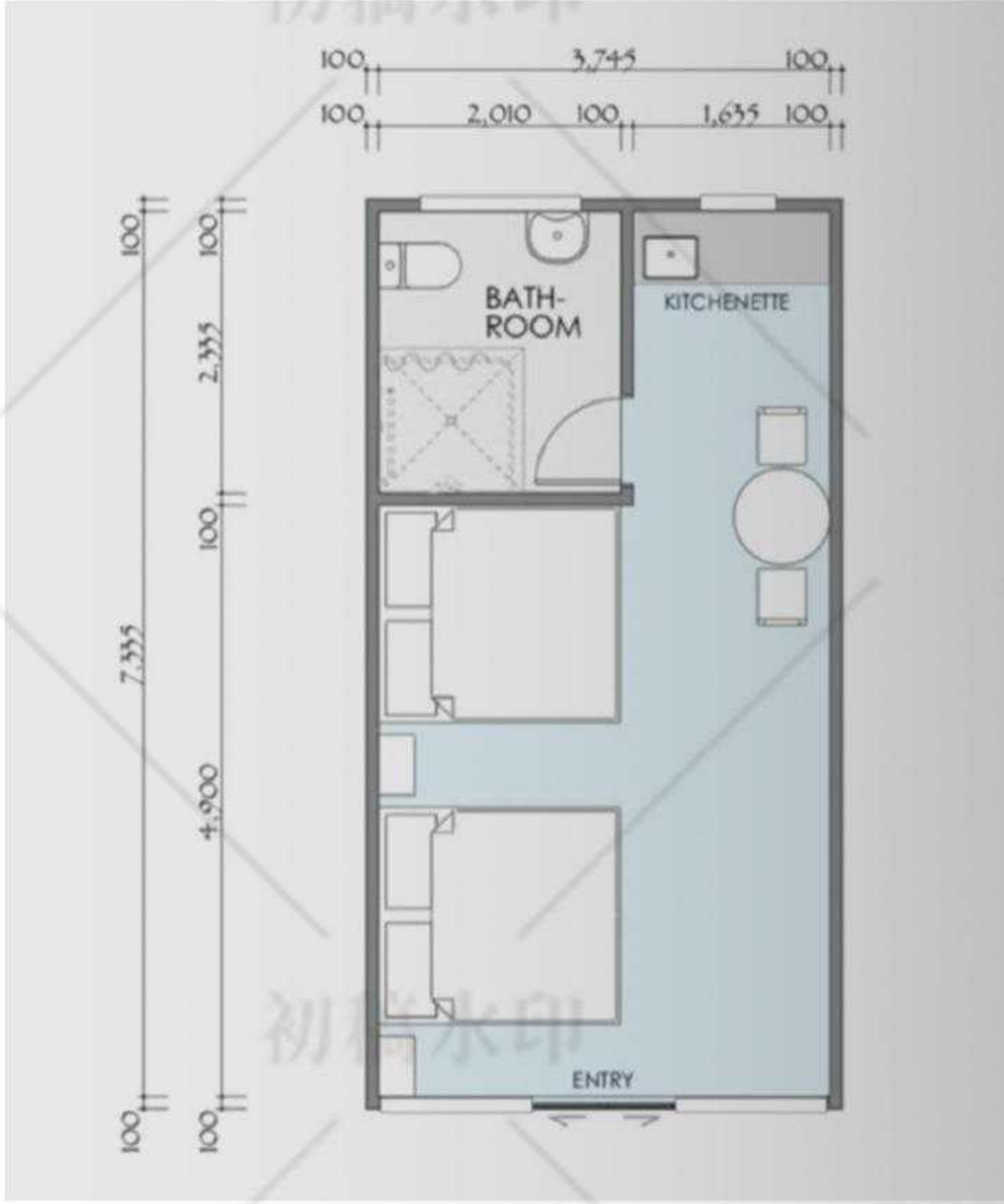
All the apartments are decorated in neutral tones, and equipped with kitchenettes with microwaves and refrigerators, as well as private bathrooms that make you feel at home.



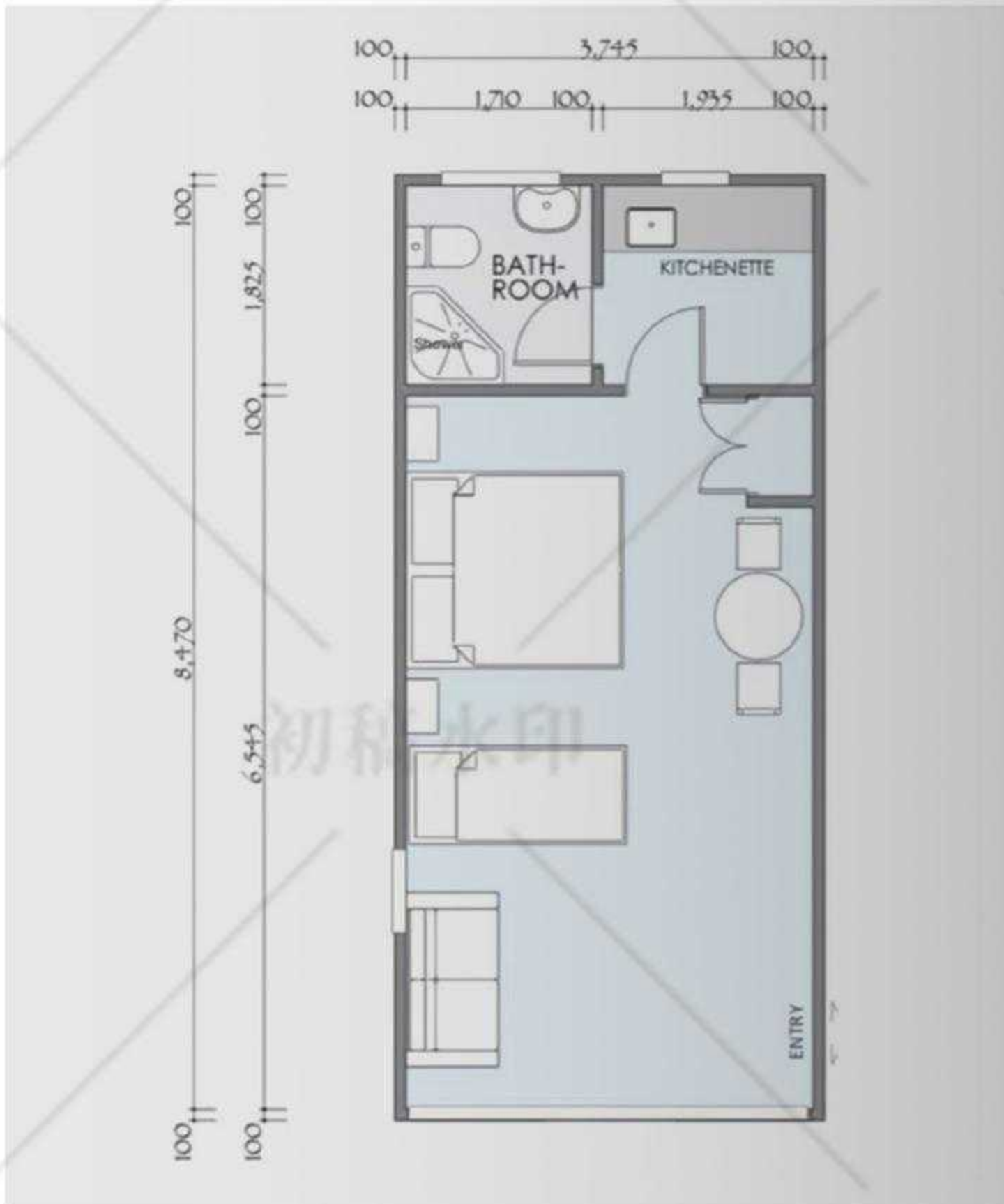


CITY CENTRAL  
APARTMENT

30<sup>m<sup>2</sup></sup>  
APARTMENT TYPE



38<sup>m<sup>2</sup></sup>  
APARTMENT TYPE



80<sup>m<sup>2</sup></sup>

APARTMENT TYPE





8

# Developed

## MATARANGI, COROMANDEL

Located at 101 Harbour Drive, matarangi, 170km from Auckland on the Coromandel Peninsula, the resort is New Zealand's premier water sports resort. Our resort is located on a beautiful golf course, right next to the 7th hole. The resort has 22 villas with lake and mountain views.



PROPERTY TYPE  
**RESORT**







1

PROPERTY TYPE  
HOUSE







The project is located in 41 Walter st Takapuna, facing the Sky tower and the Northshore Bridge, with a beautiful sea view and perfect location for the full score school district.

This project consists of three sets, each with an indoor area of 300-320 square meters, consisting of five bedrooms, four bathrooms, three living rooms, and two garages. The entire set of German furniture (with elevators available) has permanent property rights, Freehold, and is expected to be completed by the end of 2025







水印

初稿水印

初稿水印

